

Colorway 1

Smokey Marble
Navy
Black
Silver

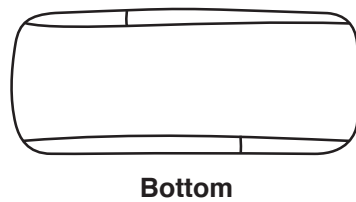
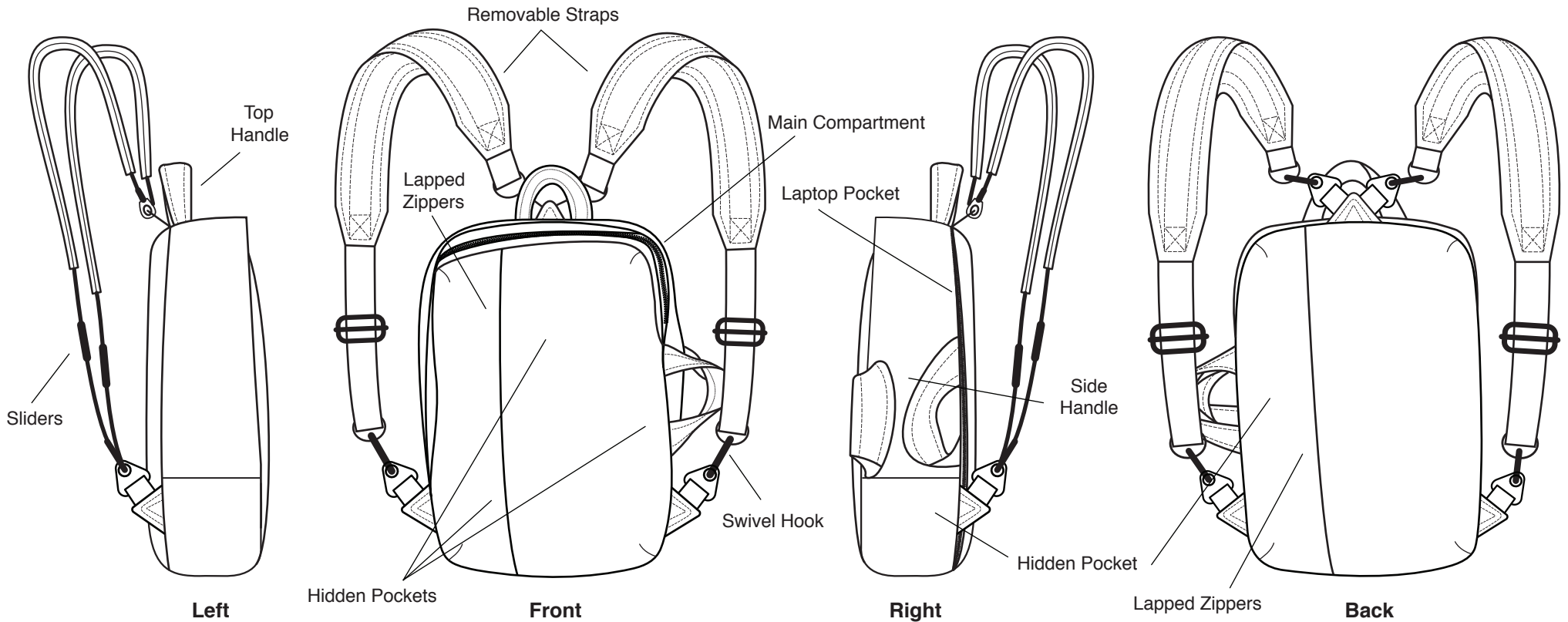
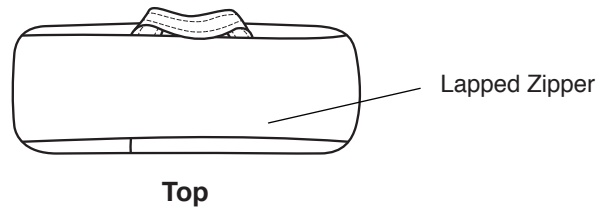


Colorway 2

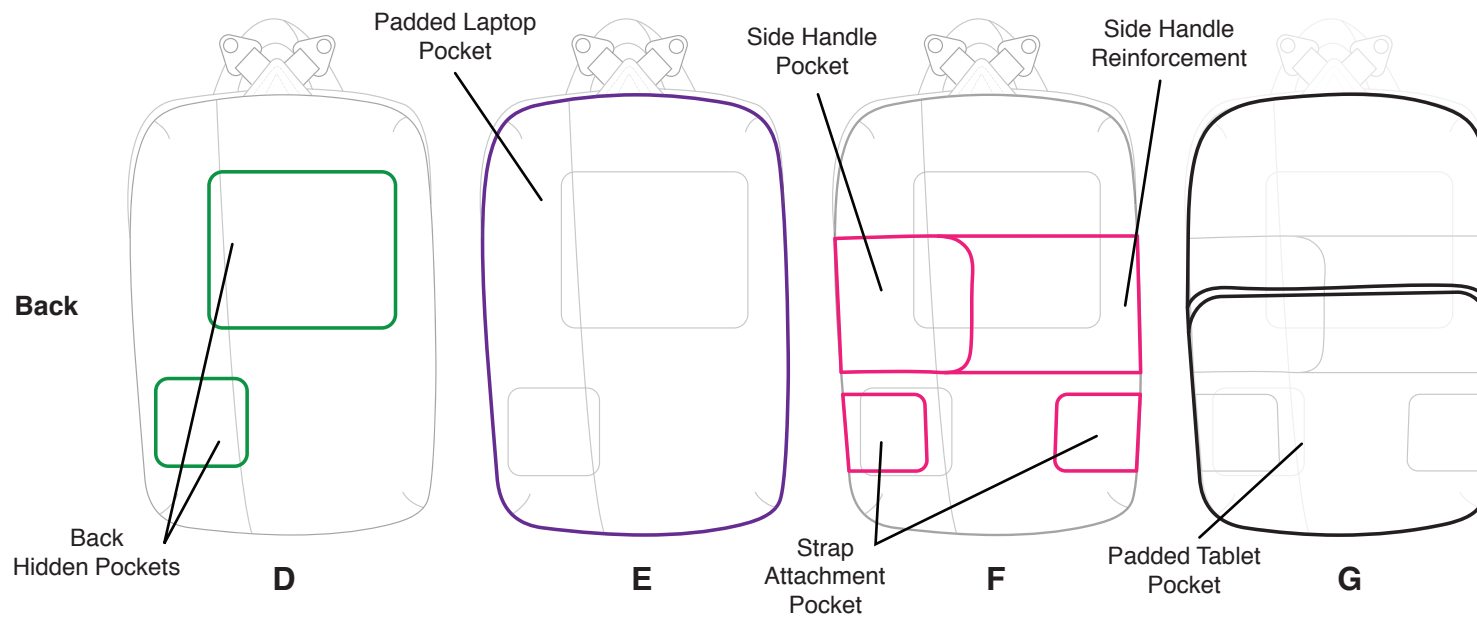
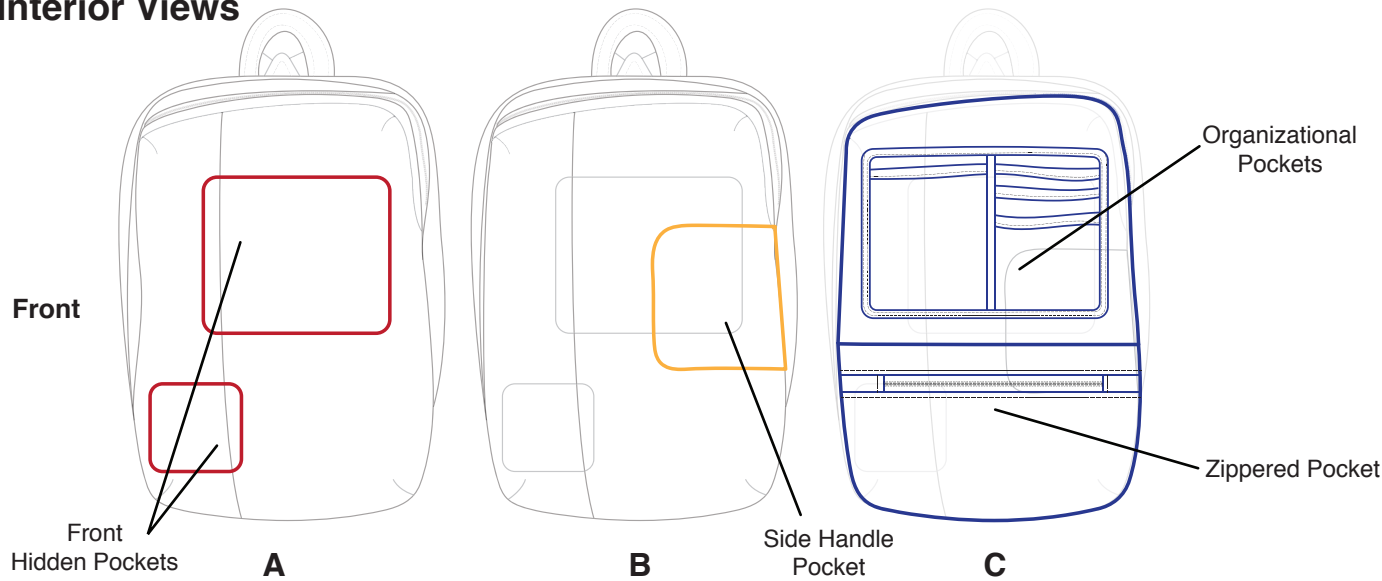
Carmel
Navy
Light Pink
Silver



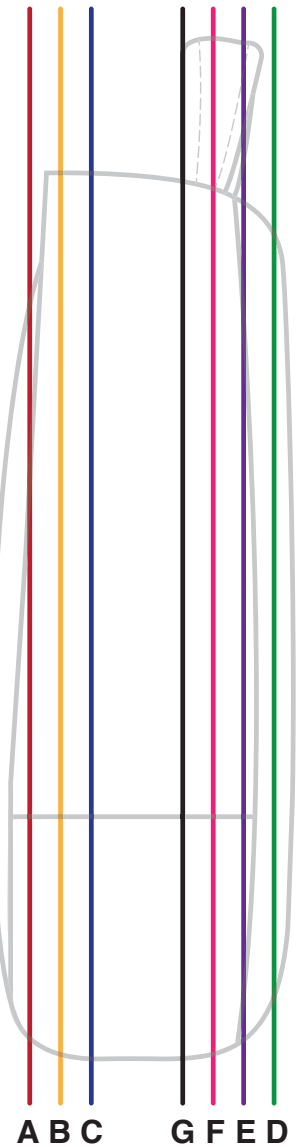
Exterior Views



Interior Views



Planes



Bill of Materials

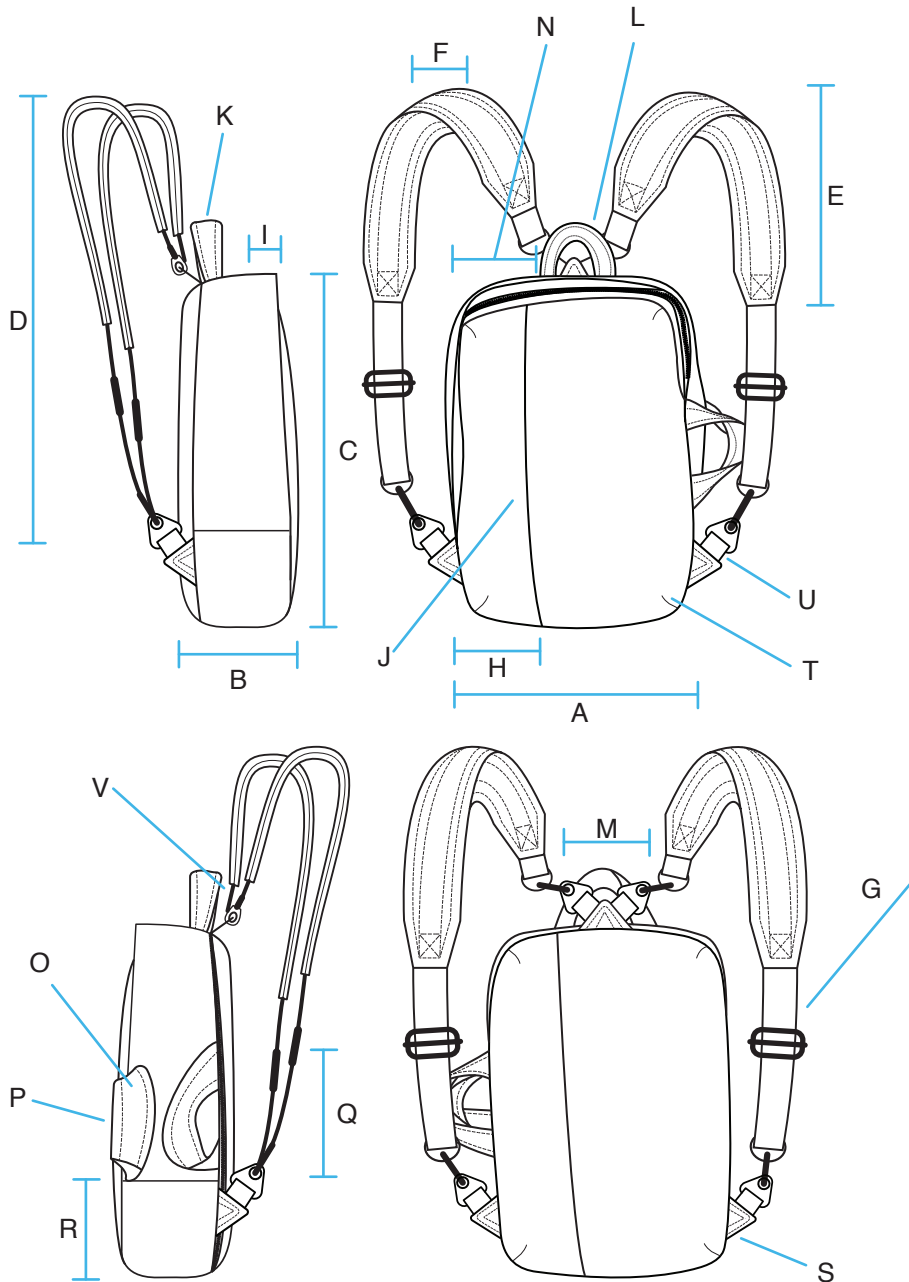
Item/Desc.	Content	Placement	Supplier	Width/Weight/Size	Finish	Qty
Smokey Mable Wool Felt	20% Wool 80% Rayon	Exterior/ Upper Straps/ Handles	Jo-Ann Stores	36in	n/a	3yds
Symphony Broadcloth Polyester - Navy	65% Polyester 35% Cotton	Interior	Jo-Ann Stores	45in	n/a	1.5yds
Blizzard Fleece Fabric - Black	100% Polyester	Laptop/Tablet Lining	Jo-Ann Stores	58in	n/a	1.5yds
Coats & Clark Dual Duty Thread - Nugrey	100% Polyester	All stitches	Jo-Ann Stores	n/a	n/a	400yds
Extra Wide Double Fold Bias Tape - Light Grey	55% Polyester 45% Cotton	Binding on interior	Jo-Ann Stores	1/2in	n/a	3yds
Interfacing	90% Polyester 10% Rayon	Support for front, back and bottom.	Jo-Ann Stores	45in	n/a	2yds
2 Side Fusible Interfacing	90% Polyester 10% Rayon	All lapped zippers Side triangles	Jo-Ann Stores	20in	n/a	1.5yd
Flex Foam Interfacing Stabilizer	100% Polyester	Laptop/Tablet Pockets. Straps.	Jo-Ann Stores	20in	n/a	1.5yd
Coat All Purpose Poly Zip - Black	100% Polyester	Laptop Pocket	Jo-Ann Stores	18in	n/a	1
Coat All Purpose Poly Zip - Black	100% Polyester	Large front and back zippers	Jo-Ann Stores	9in	n/a	2
Coat All Purpose Poly Zip - Black	100% Polyester	Small front and back zippers	Jo-Ann Stores	7in	n/a	2
Coat All Purpose Poly Zip - Navy	100% Polyester	Lining zipper	Jo-Ann Stores	7in	n/a	1
YaHoGa Separating Zipper - Black	100% Polyester	Main Pocket Zipper	YaHoGa	36in	n/a	1
Dritz 1" Polypro Belting Strap - Navy	100% Polypropylene	Lower Strap Section	Jo-Ann Stores	2yd	n/a	1

Item/Desc.	Content	Placement	Supplier	Width/Weight/Size	Finish	Qty
Dritz Triangle Rings -2pk	Metal	Strap Connections	Jo-Ann Stores	1in	Nickel	2
Dritz Swivel Hook Metal	Metal	Strap Connections	Jo-Ann Stores	2 1/4in	Nickel	4
Dritz Adjustable Slide Buckles - 2pk	Metal	Straps	Jo-Ann Stores	1in	Nickel	1
EVA Foam Sheet	EVA	Base	Jo-Ann Stores	24in X 40in X 2mm	n/a	1

Colorway Summary

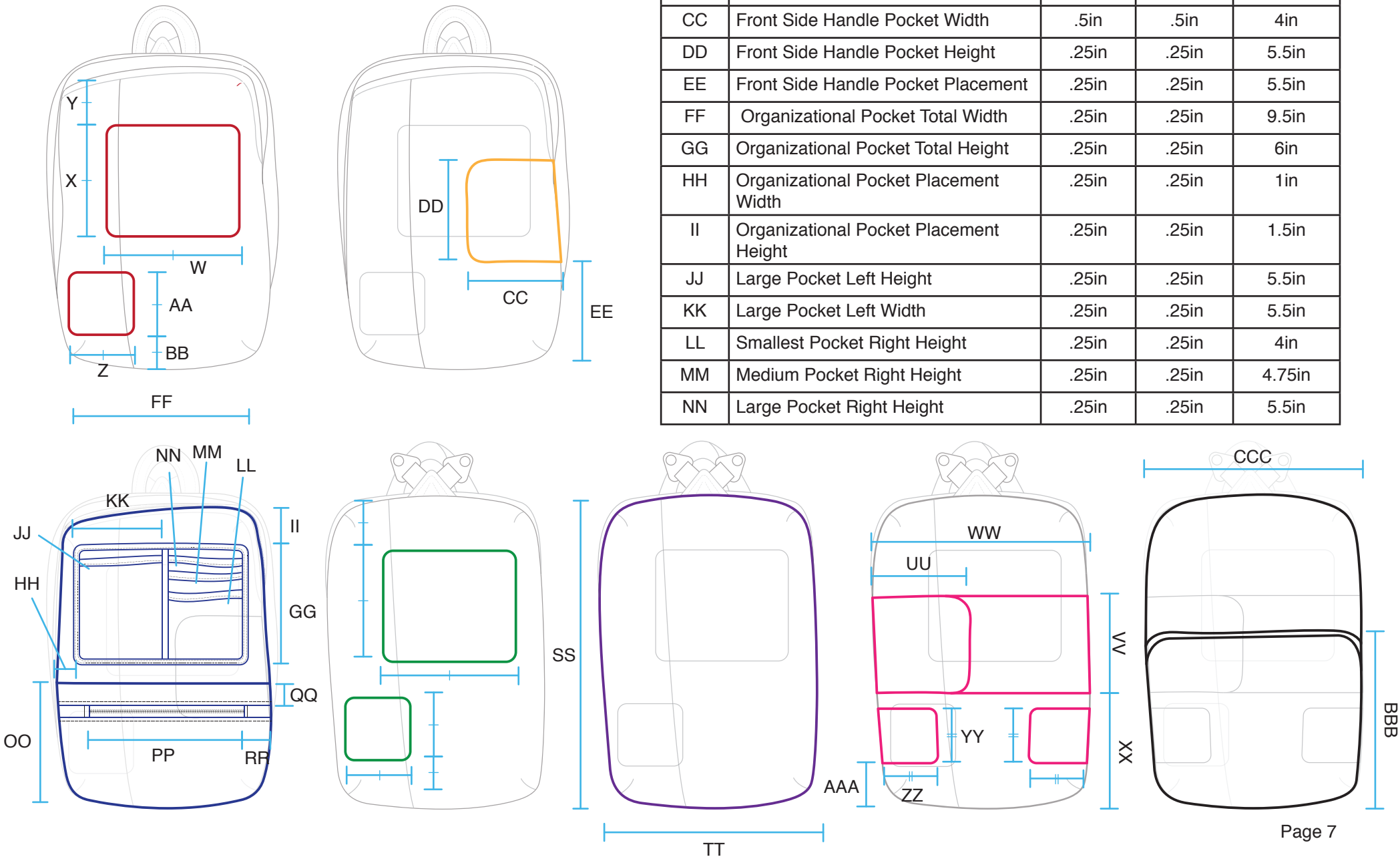
Colorway	Outer Fabric	Lining Fabric	Hardware	Zippers	Thread	Nylon Straps
Colorway 1	Smokey Marble	Navy	Silver	Black	Light Grey	Navy
Colorway 2	Carmel	Light Pink	Silver	Carmel	Carmel	Navy

Measurements



Code	Measurement	Tol (+)	Tol (-)	Size
A	Total Length	.25in	.25in	11.5in
B	Total Width	.25in	.25in	5in
C	Total Height	.25in	.25in	17in
D	Total Strap Length	.5in	.5in	80in
E	Padded Strap Length	.25in	.25in	16in
F	Padded Strap Width	.25in	.25in	2.5in
G	Nylon Strap Length	.5in	.5in	56in
H	Front Left Panel Width	.25in	.25in	4in
I	Main Pocket Lap	.25in	.25in	1in
J	Front Lap	.25in	.25in	1in
K	Top Handle Width	.25in	.25in	1in
L	Top Handle Length	.5in	.5in	7in
M	Top Handle Spread	.25in	.25in	6in
N	Top Handle Placement	.25in	.25in	2.75in
O	Side Handle Width	.25in	.25in	1.5in
P	Side Handle Length	.5in	.5in	7.5in
Q	Side Handle Spread	.25in	.25in	5.5in
R	Side Handle Placement	.25in	.25in	5in
S	Strap Triangle Length	.25in	.25in	2.5in
T	Strap Triangle Placement	.25in	.25in	2.5in
U	Nylon Triangle Attachment	.25in	.25in	.75in
V	Nylon Strap Attachment	.25in	.25in	.75in
W	Front/Back Large Pocket Width	.5in	.5in	6.5in
X	Front/Back Large Pocket Height	.25in	.25in	6in
Y	Front/Back Large Pocket Placement	.25in	.25in	3in
Z	Front/Back Small Pocket Width	.5in	.5in	4in
AA	Front/Back Small Pocket Height	.25in	.25in	2.5in
BB	Front/Back Small Pocket Placement	.25in	.25in	2in

Measurements



Code	Measurement	Tol (+)	Tol (-)	Size
OO	Seam Height Bottom Pocket	.25in	.25in	7.75in
PP	Zipper Length	.25in	.25in	7in
QQ	Zipper Placement Height	.25in	.25in	1in
RR	Zipper Placement Width	.25in	.25in	1.75in
SS	Laptop Pocket Height	.25in	.25in	17in
TT	Laptop Pocket Width	.25in	.25in	11.5in
UU	Back Side Handle Width	.5in	.5in	4in
VV	Back Side Handle Height	.25in	.25in	5.5in
WW	Back Side Handle Support Length	.25in	.25in	7.5in
XX	Back Side Handle Support Placement	.25in	.25in	2.5in
YY	Triangle Pocket Height	.25in	.25in	2.5in
ZZ	Triangle Pocket Width	.5in	.5in	2in
AAA	Triangle Pocket Placement	.25in	.25in	2.5in
BBB	Tablet Pocket Height	.5in	.5in	11.5in
CCC	Tablet Pocket Width	.25in	.25in	11.5in

Construction Details

NOTE: All SPI 8, SA .5in unless otherwise noted. Top Stitch 3/8in from edge unless otherwise specified.

	Operation - Straps	SPI	Seam Allowance	Special Instructions
A	Sew interfacing to padding and pin to one half of outer strap fabric.			
B	Pin swivel hook with nylon already attached to other half of outer strap fabric.			Use top swivel hook and nylon NOT long bottom section.
C	Sew two halves together leaving bottom angled section open and turn inside out.			
D	Insert long nylon into bottom and top stitch around whole strap and reinforce nylon connections with an X.			Pin and iron open section before top stitching.
E	Sew two more parallel lines through entire strap.			

	Operation - Handles and Triangles	SPI	Seam Allowance	Special Instructions
A	Fold handle fabric in half and sew closed.			
B	Turn inside out and top stitch.			
C	Iron interfacing on back side of triangle fabric.			
D	Pin Hardware triangle with nylon to outer fabric.			
E	Fold in half and sew closed on short end.			
F	Turn inside out and top stitch.			Top stitch another line 3/8in from original.

	Operation - Front and Back Panels	SPI	Seam Allowance	Special Instructions
A	Sew pocket linings and zippers together to create the pocket. When sewing pockets don't sew over zipper but get as close as possible. Cut excess zipper off now.		.25in	Use a smaller SA when sewing lining to zipper but use .5in SA when sewing two halves of pocket together.
B	Hold pocket by the non-zippered end and place on left side of right panel, fold the rest off to the right and sew zipper/pocket to panel.		.25in	Don't sew too close to the zipper or it will not open. Make sure to sew over seam holding the zipper and lining together.
C	Pin left lining and left fabric together and line up the edge where lining and fabric are flush with zippers and sew together.		.25in	Again don't sew too close to zippers.
D	Sew holes in between zippers shut by sewing over the zipper and in between.			
E	Make left edge of lining and left fabric flush and pin together, insert 1" x 17" 2 sided fusible interfacing into fold covering zippers. Iron until lap is sturdy and fused. Sew fabric and lining together.			Get interfacing as close to crease of fold as possible. Don't burn fabric with iron trying to melt interfacing.
F	Sew darts into corners that are 3" long.		See Special instructions	Sew moving towards the outside of the fabric at 0" SA and move to .25" SA in gradual curve.

	Operation - Laptop Pocket	SPI	Seam Allowance	Special Instructions
A	Sew interfacing and foam together ensuring it will not shift.			Do this twice.
B	Sew interfacing and foam to fleece lining hiding foam.			Sew handle first and pocket second making sure to cover stitches connecting handle and midsection.
C	Repeat same process for sewing zippered pockets on front panel, sewing linings to zipper and then sewing pocket closed.		.25in/.75in	Don't sew over zipper but get as close as possible. Sew pocket closed at .75 SA.
D	Sew pocket to back panel on three side excluding the zippered side.		.25	

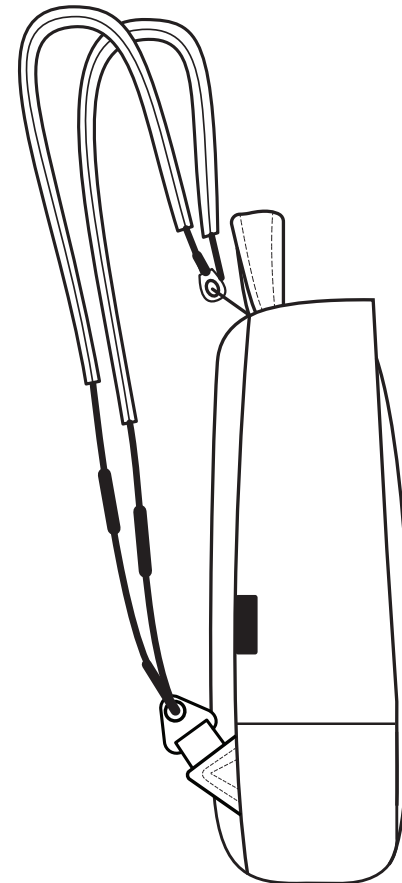
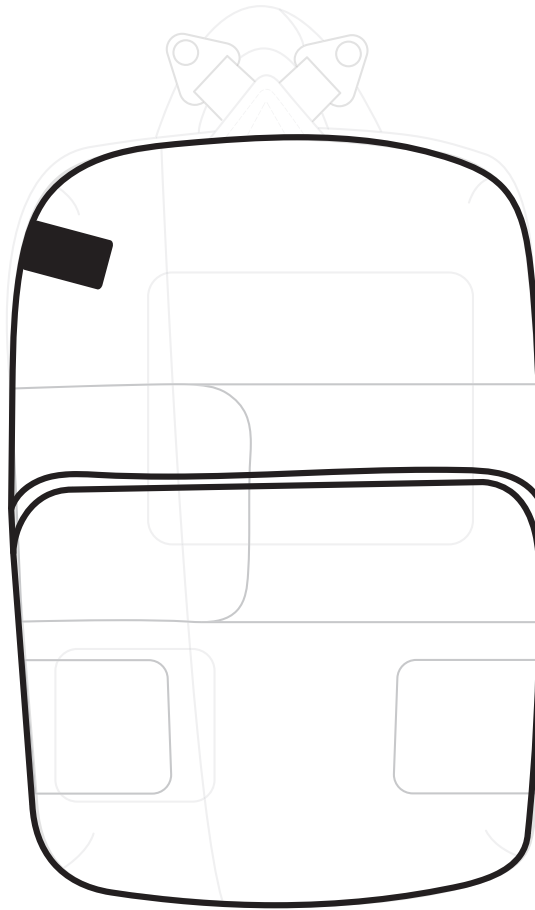
	Operation - Midsection	SPI	Seam Allowance	Special Instructions
A	Sew 36" zipper to thin strip of outer fabric and lining. Iron felt so zipper will take angled shape of fabric.		.25	
B	Place in between outer fabric and lining and sew together and iron			
C	Pin two ends of large outer fabric and lining together and insert 1" x 34" two sided interfacing into fold covering zipper. Iron until lap is sturdy and fused. Sew fabric and lining together.			Get interfacing as close to crease of fold as possible. Don't burn fabric with iron trying to melt interfacing.
D	Sew bottom outer fabric to one side of upper midsection.			Align bottom fabric with STRAIGHT end of upper midsection, no the angled end.

	Operation - Connecting Front and Midsection	SPI	Seam Allowance	Special Instructions
A	Pin midsection to front panel using seam between upper and lower midsection as a guide ensuring its 5" from bottom of front panel.			
B	Once pinned make sure seam on opposite side of midsection will line up before marking and unpinning.			It likely will not line up so there will be excess material on either the upper or lower midsection. Remove after sewing.
C	Sew midsection together and sew side handle pocket lining, aligning the edge with seam on midsection.		.25	
D	Sew front side handle and pocket to right side of front panel 5.5" up from bottom.		.25	Sew handle first and pocket second making sure to cover stitches connecting handle and midsection. The edge of the handle should be at 5.5in but with the SA of the pocket will rest at 5in.
E	Pin midsection and front panel together making sure everything is aligned and sew together.			Make sure to not sew side pocket closed.

	Operation - Connecting Front and Midsection to Back.	SPI	Seam Allowance	Special Instructions
A	Sew side handle pocket to midsection aligning the edge with seam.		.25in	
B	Sew strap triangle and triangle pocket lining to midsection .75in below midsection seam. Do this on both sides.		.25in	Sew triangle on first and then lining, being sure to cover seams.
C	Sew back side handle and pocket to left side of back panel 5.5" up from bottom.		.125in	Sew handle first and pocket second making sure to cover stitches connecting handle and midsection. The edge of the handle should be at 5.5in but with the SA the pocket will rest at 5in.
D	Sew triangle pockets to back panel 2.5" up from bottom on both sides.			
E	Center top triangle and handle on back panel and attach.		.25	Sew triangle and then handle first. Triangle should fit nicely inside handle.
F	Sew tag to back panel.			
G	Pin both sections together and make sure everything aligns. Sew around whole perimeter and turn inside out to make sure all seams were covered and the pockets were not sewn shut.		.25in/.5in	When sewing along zippered laptop pocket use .a 25" SA and .5" SA for the rest of the bag
H	Sew back side handle support to opposite side of bag.			
I	Sew base EVA foam to interfacing the same size as the outer base fabric.			Put enough seams so the foam will not shift.
J	Turn bag inside out and sew EVA and interfacing to base.			

	Operation - Lining	SPI	Seam Allowance	Special Instructions
A	Sew interfacing to foam for tablet pocket.			Put enough seams so foam will not shift.
B	Sandwich interfacing and foam in between fleece lining and navy lining and sew along perimeter of tablet pocket.		.25in	
C	Using bias tape bind the top edge of the pocket. Then pin and sew to main back lining panel.		.125in/.25in	Use .125" SA for binding and .25" SA for attaching pocket to back panel.
D	Sew two zipper buffers to opposite ends of the zipper and top stitch.		.25in	Top Stitching should remain at 3/8".
E	Sew zipper and thin strip of 1" lining fabric together.			
F	Sew outer and lining of bottom pocket to zipper top stitch.			
G	Sew whole pocket to bottom half of front lining aligning corners		.25in	
H	Top stitch along 1" strip of fabric.			
I	Bind raw edges of organizational pockets.		.125in	Don't bind outer portion yet.

	Operation - Lining	SPI	Seam Allowance	Special Instructions
J	Sew small and medium pockets together leaving top open.			
K	Align small and medium pockets with left side of long section. Sew either end to backing, leaving top and bottom open forcing excess fabric in the middle.			Mark on the backing and on the long section where the seam should be between the two sections of pockets.
L	Create gussets in long section of allow pocket to lay flat at the bottom and sew along the bottom.		.25in	
M	Sew loose end of small and medium pockets down covering with bias tape.		.125in	Make two lines with a SA of .125" from either edge.
O	Bind whole pocket		.125in	
P	Sew whole pocket to inside front lining leaving the top open.		.125in	
Q	Sew bottom lining to either half ensuring it's properly aligned.			
R	Insert lining into bag and bind all seams showing.		.25	



Care Label Information
Label Material: 100% Polyester Label Size: .75" x 1.5"
Fiber Content: 20% Wool 80% Rayon
Care Instructions: Hand wash bag gently with warm soap and water to remove stains. Use gently cycle with cold water to machine wash

Brand Label Information
Label Material: 65% Polyester 35% Cotton Label Size: 1.5" x .5"
Construction Instructions: Fold fabric in .5" on long sides and then fold in half. Sew in to seam 2" above midsection seam.